

# VistaScan Mini View

## Kurzanleitung

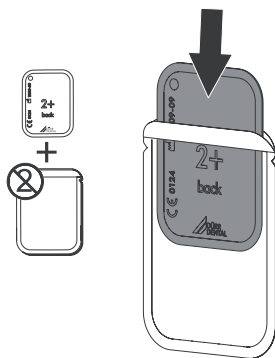
### Bilddaten auslesen über Computer

Die folgenden Informationen sind eine Ergänzung zur Montage- und Gebrauchsanweisung des Gerätes.

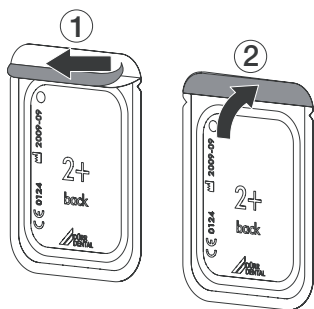
Grundsätzlich ist zusätzlich die Montage- und Gebrauchsanweisung des Gerätes zu beachten, in der wichtige Informationen wie z. B. Sicherheitshinweise, Aufstellung, elektrischer Anschluss, Desinfektion, Reinigung, etc. beschrieben sind.

## 1 Bilddaten auslesen über Computer

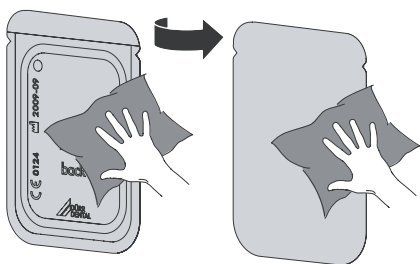
1.



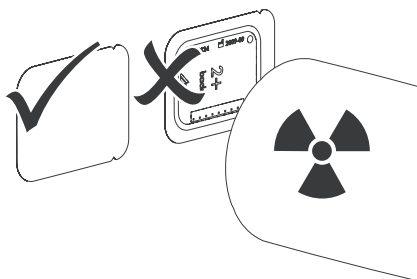
2.



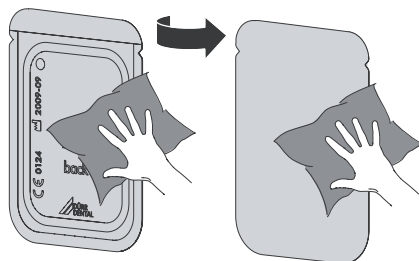
3.



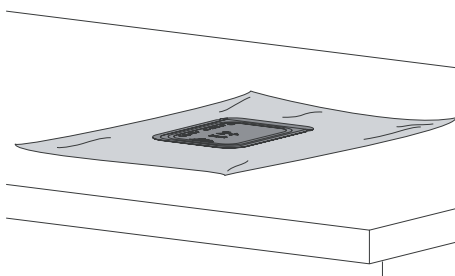
4.



5.



6.



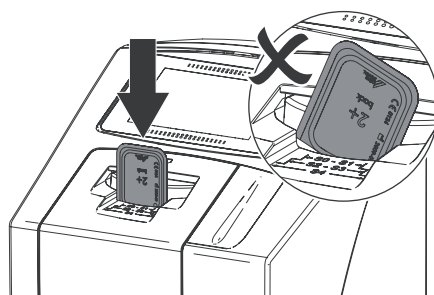
7.



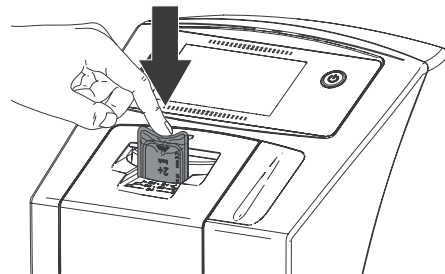
8.



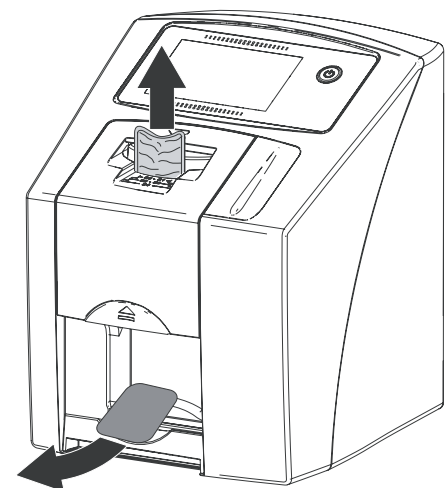
9.



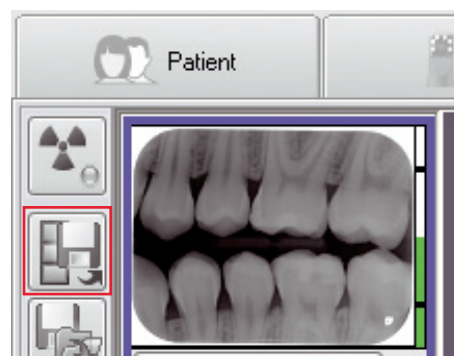
10.



11.

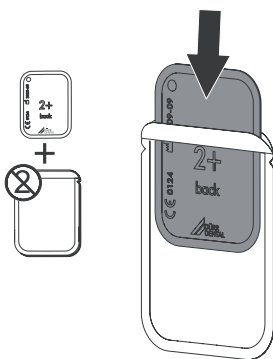


12.

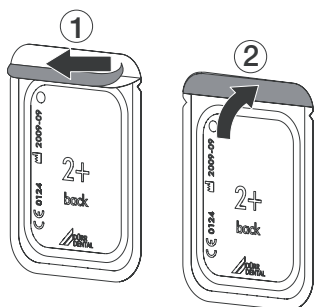


## 2 Bilddaten auslesen über Touchscreen am Gerät

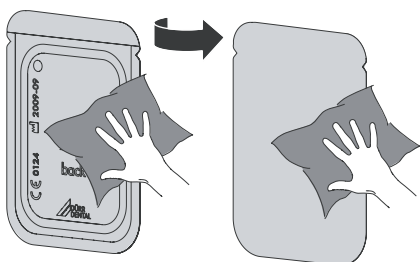
1.



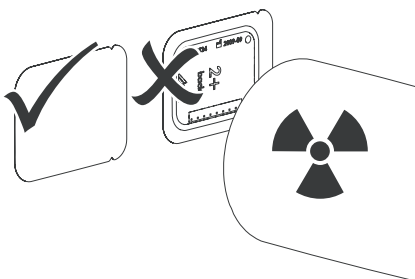
2.



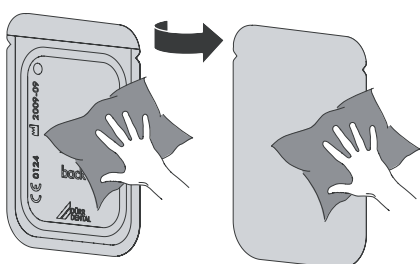
3.



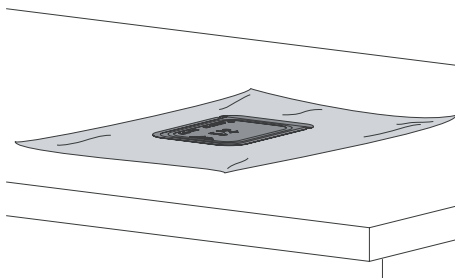
4.



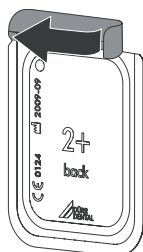
5.



6.



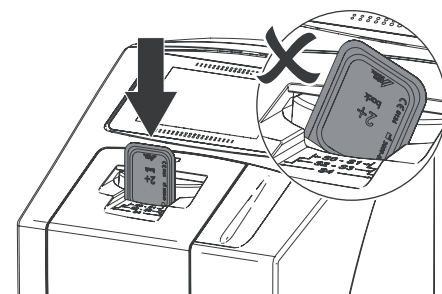
7.



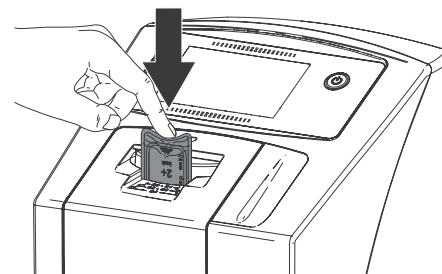
8.



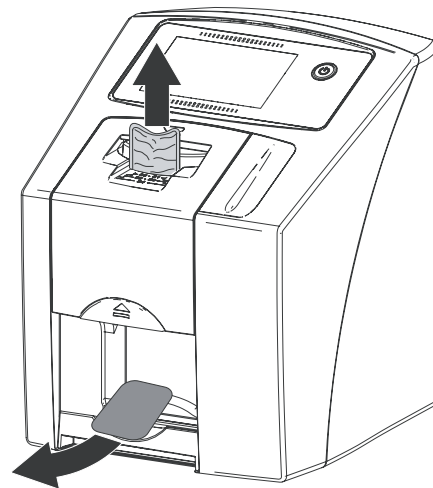
9.



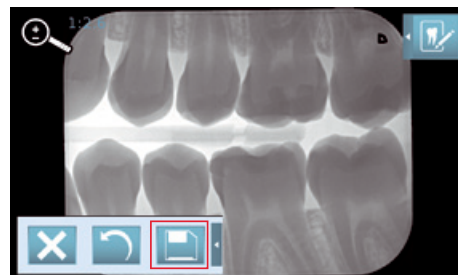
10.



11.



12.



# VistaScan Mini View

## Short introduction

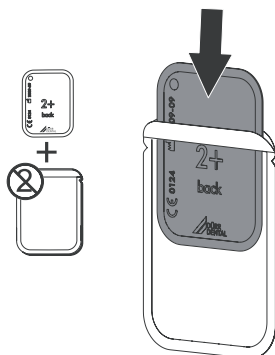
### Reading the image data using the computer

The following information is supplementary to the appliance Installation and Operating Instructions.

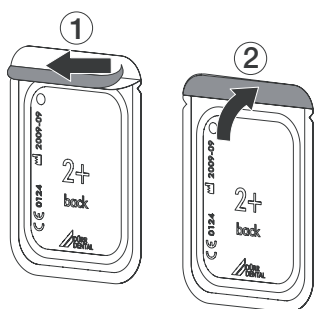
Always refer to the Installation and Operating Instructions of the appropriate appliance in which important information is detailed, e. g. Safety Instructions, Set-up, Electrical Connections, Disinfection, Cleaning, etc.

## 1 Reading the image data using the computer

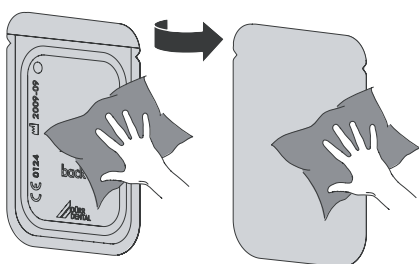
1.



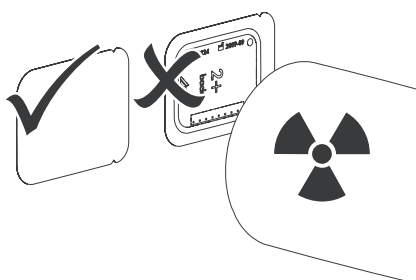
2.



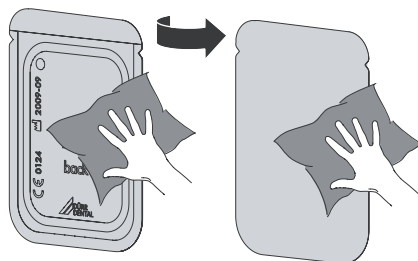
3.



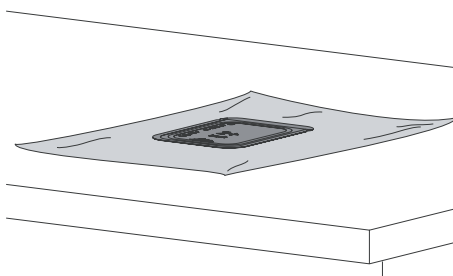
4.



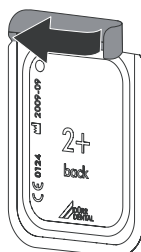
5.



6.



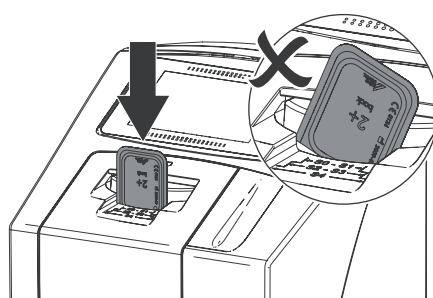
7.



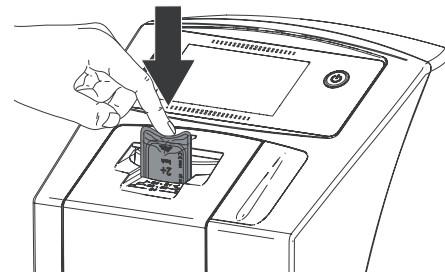
8.



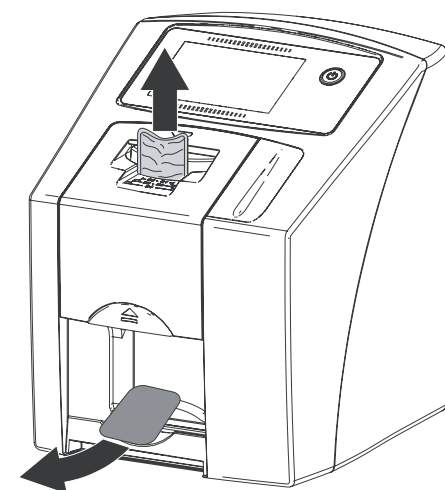
9.



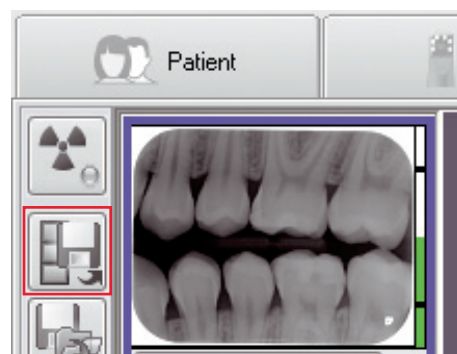
10.



11.

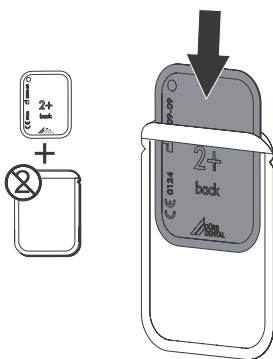


12.

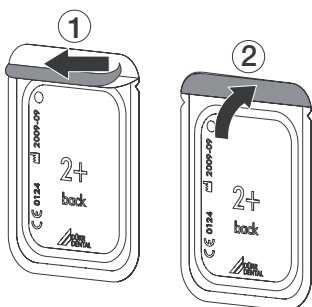


## 2 Scanning image data using the unit touch screen

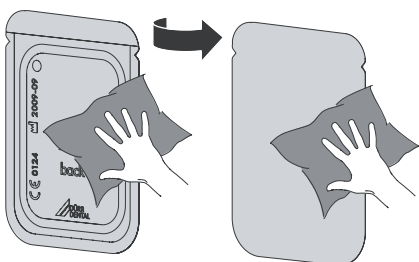
1.



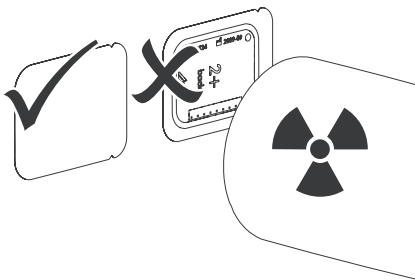
2.



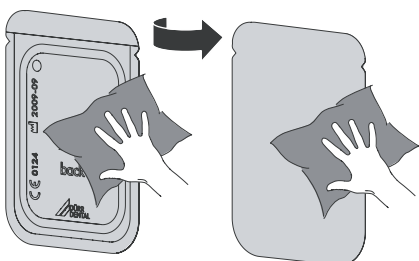
3.



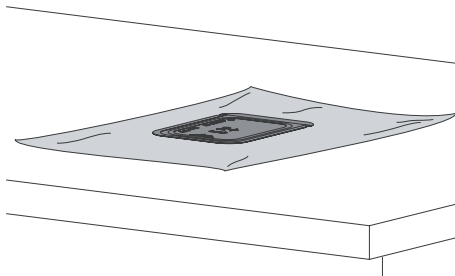
4.



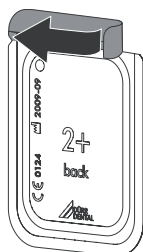
5.



6.



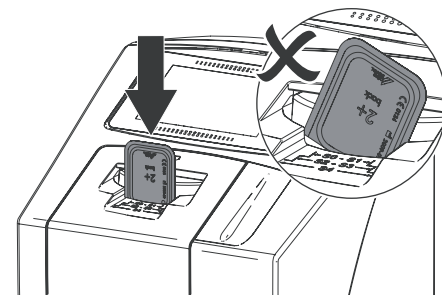
7.



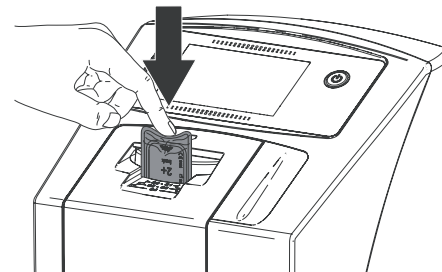
8.



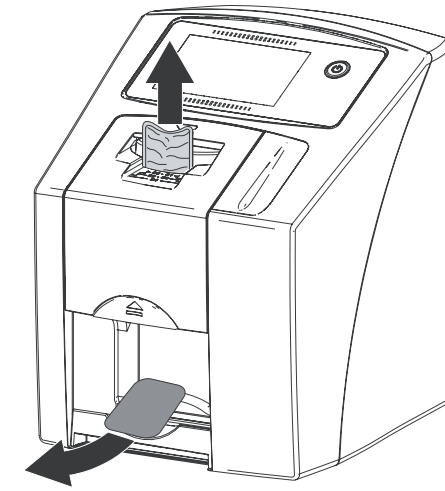
9.



10.



11.



12.

