



Endodontics is an art

Integrated solutions for excellent root canal treatments

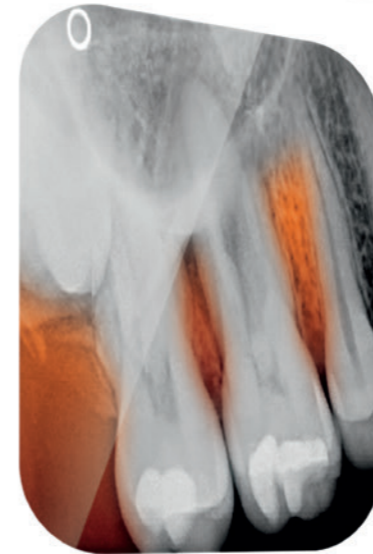
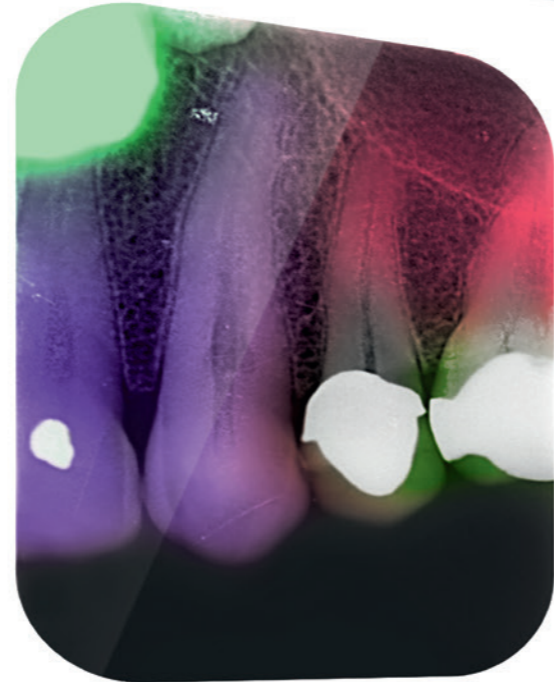
Thinking ahead. Focused on life.



Created for the art of tooth preservation

There is nothing better than preserving the natural tooth as long as possible. The awareness that this is so has revolutionized endodontics in recent years. The modern dentist has at his disposal a whole range of different technologies for keeping teeth intact – even where the root canal system is very delicate and displays tight curvatures.

Morita's apex locators have an excellent reputation all over the world. But that's not all, by a long shot. As a well-established, competent partner for all dental practitioners, Morita offers a comprehensive spectrum of ultra-precise systems which provide all-round support to endodontists in the preparation of every type of root canal – **a decisive precondition for successfully practicing the art of tooth preservation.**

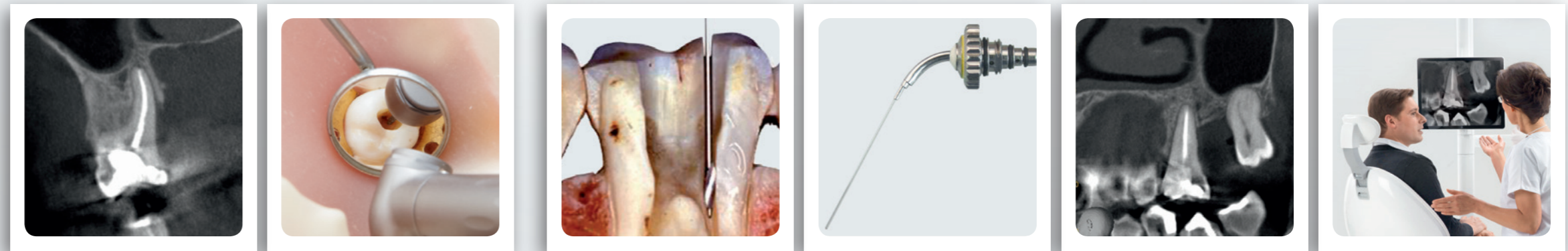


Excellent support for your art

“Integrated safety-functions and new-style rotating instruments are only some of the Morita technologies which provide support to endodontists in the daily challenges they face – for a swift, safe and simple preparation of every sort of root canal. In just a few minutes, even a complex root canal system is given a safe and secure preparation. **Shorter treatment times, best clinical results: this is what really counts for endodontists and their patients. And it is in just these respects that Morita’s systems and instruments guarantee support, every working day.**”

*Prof. Emanuele Ambu,
Specialist for Endodontics and
Surgery, Bologna, Italy*

Morita’s endodontic systems will accompany you through every step in your treatment – from the entire solution down to the individual instrument.



Diagnosis & planning

Trepanation

Measurement & preparation

Irrigation & disinfection

Filling

Follow-up

The Soaric treatment unit, specially designed to fit the endodontic workflow

Imaging systems:
Veraviewepocs 3D F40 | Veraview iX

Instruments:
TwinPower Turbines
Handpieces and contra angles of
TorqTech and Tokyo series

**Apex locators, endo motors or
combined preparation systems:**
DentaPort ZX Set OTR | TriAuto ZX
Root ZX mini | TriAuto mini
EndoWave and ZX files

Instruments, lasers:
Ultrasonic scalers (integrated in Soaric)
Er:Yag laser AdvErL Evo

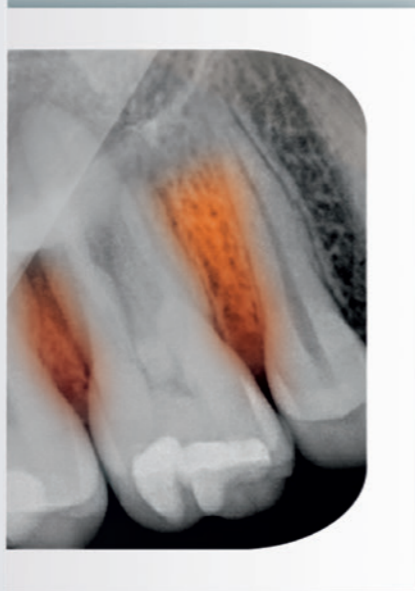
Curing lights:
PenCure

Imaging systems:
Veraviewepocs 3D F40 | Veraview iX

The Soaric treatment unit

As extraordinary as your ability

Endodontics is everything – except ordinary. This is why Morita has created, with Soaric, a special treatment unit which supports this extraordinary art in every facet of its practice – from diagnosis right up to follow-up. The integrated microscope, for example, contributes here to a significantly better quality of root canal treatment. **Because to treat something, you have to be able to see it.**



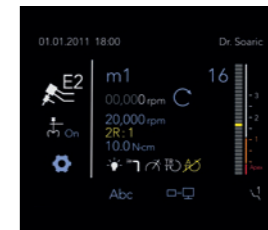
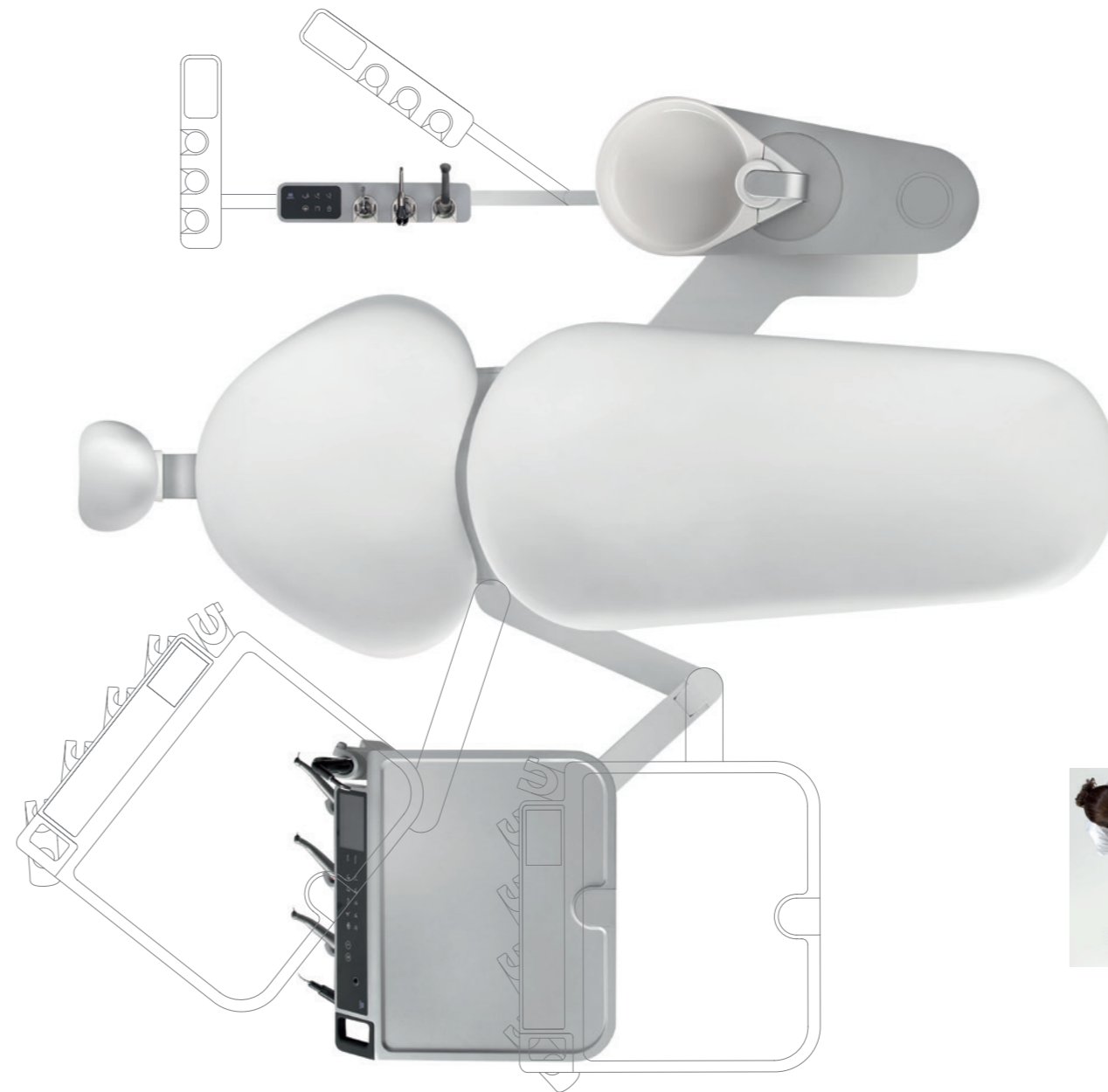
Artful insights

The **integrated microscope** enables you to discover even the smallest anatomical structures. Even the most awkward deviations from expected root canal anatomy, such as forking, tears, or fractures, can be more easily recognized and more precisely treated. Additional advantages: the integration of the microscope directly into the treatment unit gives you an entirely new degree of freedom of movement. The slow-speed mode of the patient chair also allows you to focus with to-the-millimeter exactitude during treatment.



Precise work as a team

Special provision has been made for the spaces of movement required for perfectly coordinated treatment as a team. All the instruments are arranged in such a way that they provide ideal support to a **“four-handed”** or **“six-handed”** treatment and can be reached and passed around in a manner appropriate to each situation.



A window to knowledge

The preparation of a tooth requires all your concentration. With the **navigation interface**, you can keep all the parameters securely in sight throughout the whole treatment. The integrated endomotor, which includes an apex locator, sends the measurement data directly to your monitor, so that you can follow there, for example, the changing position of the file tip within the root canal. An equally practical feature: the nickel-titanium files transmit the electrical signal without need of a separate file electrode, which means you can switch from file to file much more easily and quickly.



An expression of ergonomics

All the instruments in the operator's element can be picked up and replaced without your having to look away from the microscope eyepiece. The individually swivel-mounted instrument holders and the innovative strain-relief mechanism open up for you that **freedom of movement** which you need in order to practice the art of tooth preservation.



Microscope image by courtesy of Carl Zeiss Meditec / Thomas Clauder, Hamburg, Germany

Diagnosis & planning

The power of the unique



Veraview iX



The monitor can be used to communicate with the patient "in large format"

Every tooth is unique – and cone beam CT helps the dentist to form an exact picture of the specific root morphology involved, in order to plan the treatment. It allows a clear representation even of complicated root structures and of teeth with multiple roots. It also allows the dentist to form a precise judgment regarding adjacent structures which may also be affected.

With images that are as unique as their originals.

Visible details

Individuality has many details. It's a good thing, then, that Veraviewepocs 3D F40 makes them all visible. Whether you use the 3D, panorama, or local imaging option, you will not only get an exact view down into the individual root structures but also all the information that you will need for the planning of a root canal treatment. With only one fifth of the radiation dosage of conventional CT scans. Within seconds.

Certainty, fast

With its shortened tube and high-precision positioning laser, the intraoral imaging system Veraview iX makes an exact focusing on the area you want to image an easy matter. In just a few moments you will have the informative tooth-morphology data that you need for the precise planning of a root canal treatment.

The art of convincing

The more clearly you can explain the condition of the tooth, the more understanding your patients will show for the necessary steps in the root canal treatment. The simple way to make the diagnosis clearer is just to display the 2D and 3D images on the monitor of the Soaric treatment unit.



When the finest filigree work is called for

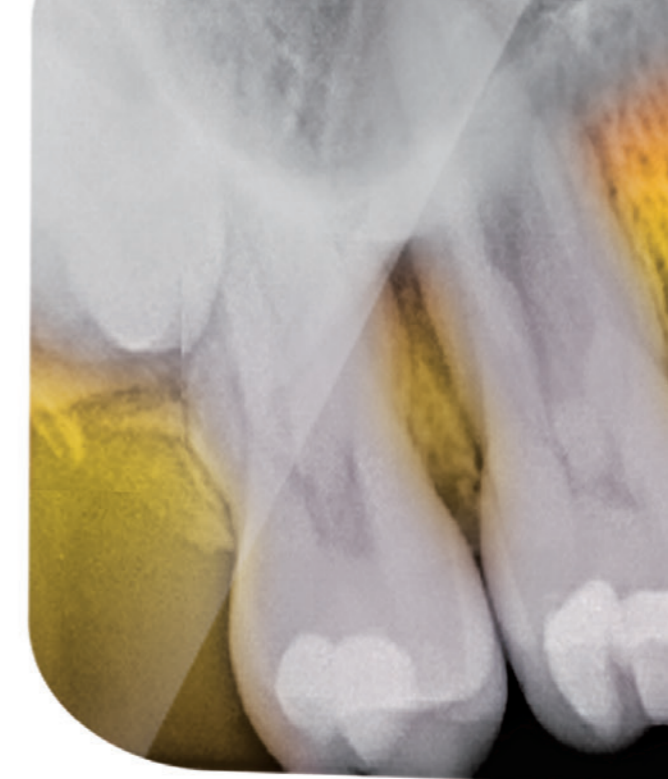
As delicate as a brush stroke: Trepanation calls for especially fine work. With our turbines, handpieces and contra angles, you have technology of the finest quality at your fingertips. Their small instrument heads give you a direct view of the area you need to prepare. And at the same time, these compact instruments offer consistently high performance and give you additional room to move, especially when treating molars.

Ready for your performance

The **TwinPower Turbine** combines form and function perfectly. Besides its innovative technology with its unique double rotor, its minimized dimensions and weight make it particularly handy. And at the same time, you can rely on its all-round powerful performance – while making your own performance so much easier and more convenient.

Ergonomics with esthetic appeal

Sturdy contra angles with a delicately shaped head and quiet operation: the handpieces and contra angles in the **TorqTech** and **Tokyo series** are compact and ergonomically shaped, and come with very small instrument heads. They are easy to use and convenient to clean – in short, they make every trepanation easier.



Knowing every micron



In every art, knowledge is the foundation of ability. To skilfully preserve something, you need a precise knowledge of it. Modern endodontic systems ensure that you find your way confidently around in the root canal, thereby creating ideal conditions **for your art to reach every single micron of this canal.**

Precision in perfect form

Just like its legendary predecessors, the Root ZX mini too measures the length of the root canal with total precision and reliability, regardless of any rinsing fluids or blood that may be present in it. A major advantage for your art is the large color-display screen, from which you can immediately, at any time, read off the exact position of your file.

Artistic freedom – redefined

The cordless TriAuto mini endodontic motor opens up entirely new realms of freedom in the preparation of the root canal. This thanks to its minimal weight, small head, and innovative safety functions such as the “Auto Torque Slow-down”, which effectively avoid file breakage. If the Root ZX mini and the TriAuto mini are connected up with one another, the Auto Apical Reverse function is there to prevent over-preparation.

A masterpiece – in record time

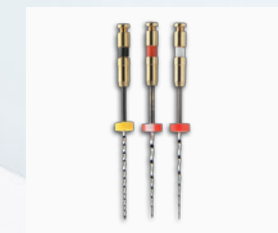
Developed in collaboration with international endodontics experts, the new-style file sets allow a fast, effective, and safe root canal preparation using only three nickel-titanium files. Zipping and stripping are avoided – even in narrow and strongly-curved canals.



TriAuto mini



EndoWave Hybrid Files



OTR file sequence

Masterpieces of precision



The numerous awards and distinctions we've received from Reality and Dental Advisor leave no doubt: Morita's endometric systems are masters of precision. The integrated units for the simultaneous measurement and preparation of the root canal were designed to meet the most demanding standards in endodontics. **And this goal of meeting the very highest standards remains our goal today.**

Combined in precision

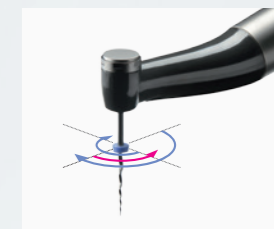
Perfect endodontic treatment is fast, ultra-precise and ensures total protection. The DentaPort ZX Set OTR measurement and preparation system meets these requirements completely. Its innovative Optimum Torque Reverse function automatically monitors file rotation. The system's very low torque helps you to ensure maximum tooth protection and keep file breakages to a minimum.

Endodontics lies in the palm of your hand

Art needs freedom. This is why the TriAuto ZX is cordless. With this combined system, length measurement and preparation can be carried out simply and safely – thanks to such innovative functions as the "Auto-Start/Stop" and the "Auto Apical Reverse".

Perfection is a question of form

The s-shaped profile and rounded tips of ZX-System file set help to greatly minimize fracture risks – thereby providing the basis for safe endodontic treatments. The 90° angle of the cutting edges to the dentin surface enables efficient operation in tight and crooked canals. To complete the picture, the ZX file system can be combined with the TriAuto ZX handpiece to allow convenient preparation.



Optimum Torque Reverse (OTR)



TriAuto ZX



ZX-System file set

Maximum success with a minimalist design

Success always comes from precise craftsmanship – and this applies particularly to the complete and safe eradication of bacteria in the root canal. This is where you can rely on our updated and redesigned ultrasonic scaler. For complex canal systems and revisions – in other words, where maximum safety is required – the new AdvErL Evo Er:YAG laser comes into its own.

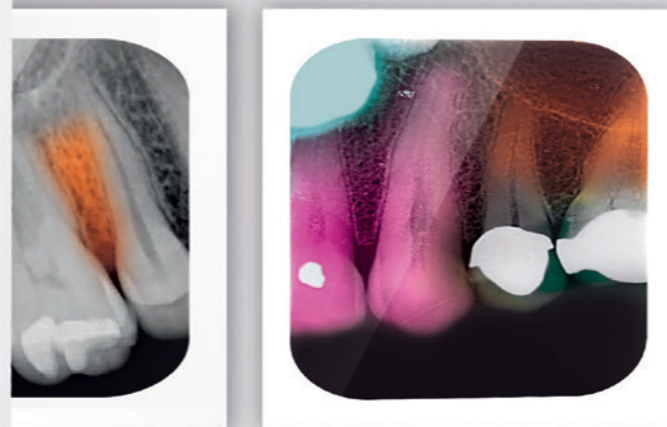
A new addition to endodontics that is both advanced and economical.

Integrated convenience

Our **Solfy ultrasonic scaler** helps you achieve effective root canal rinsing and preparation. These functions are conveniently incorporated into our Soaric treatment unit and come with many highlights – for example an extensive range of tips and an LED light. Its 27 kHz frequency also gives it a powerful scaling function.

Time for innovations

Keeping endodontics up with contemporary trends – thanks to the laser-assisted method used by the **AdvErL Evo Er:YAG laser**. It combines ease of handling with powerful performance and a design that says 'style.' Its benefits come to the fore especially when root canals have to be completely sterilized.



Setting the seal on work well done

Always the most rewarding moment for the dentist treating a patient: the sealer climbs up the canal walls and fills the canal right up to its narrowest tip, from apical to coronal. Thanks to highly efficient light polymerisation there takes form, within seconds, a root filling completely proof against bacteria – **the artful seal placed on your work.**

1, 2, sealed

The highly focused LED light beam supports effective curing of the post-endodontic adhesive finish of the access cavity – in a mere three seconds. The small head of the PenCure 2000 curing light enables easy curing even in molar regions.

Sparkling finish

A key feature for bleachings: The curing head of the PenCure 2000 can be easily exchanged with a single tooth bleaching attachment.



PenCure 2000

A new standard for art: the voxel

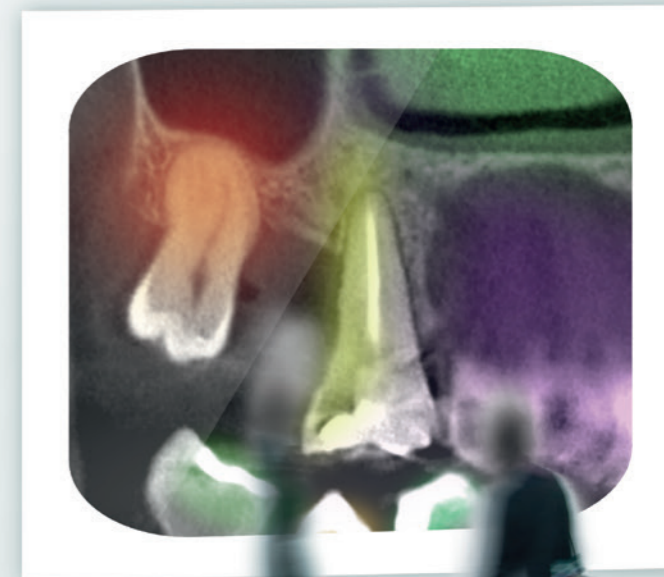
The value of art, people say, is in the eye of the beholder. But modern cone beam CT says otherwise. With this technology it's possible to make a clear and certain judgment on whether a root canal treatment has been successful. If required, it uses the volumetric "voxel" to enrich the two-dimensional "pixel" by a further dimension: spatial depth. **So that your post-treatment follow-up provides you and your patient with certainty – from every point of view.**

A new dimension of certainty

Cone beam CT with the Veraviewepocs 3D F40 helps you to check the success of a root canal treatment from all sides with total precision. The combination system leaves the choice up to you: you can prepare either 2D or 3D images. Images even of the smallest areas can be positioned freely. You will enjoy the advantages of minimal radiation doses combined with highly detailed images barely disturbed by scatter artefacts.

Art speaks for itself

The Soaric treatment unit is equipped with a monitor. On this, during post-treatment check-up, you can explain to your patients the present condition of the tooth, simply and clearly, using X-ray images. Because often a picture says more than a thousand words.



Diagnostic and Imaging Equipment

Treatment Units

Handpieces and Instruments

Endodontic Systems

Laser Equipment

Laboratory Devices



Distributed by

J. Morita Europe GmbH

Justus-von-Liebig-Str. 27a

63128 Dietzenbach

Germany

T +49. 6074. 836 0, F +49. 6074. 836 299

www.morita.com/europe

Developed and manufactured by

J. MORITA MFG. CORP.

680 Higashihama Minami-cho, Fushimi-ku

Kyoto 612-8533

Japan

T +81. 75. 611 2141, F +81. 75. 622 4595

www.morita.com

J. Morita Tokyo Mfg. Corp.

7129 Komuro Ina-machi,

Kitaadachi-gun, Saitama

362-0806 Japan